

Heads Up

Standard tuning

Ditchbird
Transcribed by Dave Taylor

Lead Guitar
(0:46)

Guitar

T
A
B

3 3 3 3 3 3 3 3 3 3 3 3 3 3 3 3

Main riff

2 3 2 3 2 3 2 3 2 3 2 3 3 0 3 2 3 2 3 2 3 2 3 2 3 2 3 3 0

2 3 2 3 2 3 2 3 2 3 3 0 3 2 3 2 3 2 3 2 3 2 3 2 3 3 0

(1:03)

3 0 0 3 3 0 1/3 0

3 1 1 1 0 1

Right speaker guitar
(Main riff is in left speaker)

1 1 1 1 1 1 1 1 1 1 1 1 1 1 1 1

Heads Up

2

(1:23)

Tablature for the first system (1:23). It consists of six horizontal lines representing guitar strings. The top two lines have 'x' marks at the end, with fret numbers 1 and 2 written below them. The bottom line has a '3' at the beginning and '0 3' further along.

Tablature for the second system. It features six horizontal lines. The top line has '0', '1', '0', and '2' written below it. The second line has 'x' marks with fret numbers 1, 2, and 3 below them. The third line has '0', '1', '0', and '2' written below it. The bottom line has a '0' at the end.

Tablature for the third system. It consists of six horizontal lines. The top line has '3' at the beginning and '3' at the end. The second line has '0' and '0' written below it. The third line has '0' and '0' written below it. The bottom line has '3', '0 3', and '0' written below it.

Tablature for the fourth system. It features six horizontal lines. The top line has 'x' marks with fret numbers 1, 1, and 1 below them. The second line has 'x' marks with fret numbers 3, 3, and 3 below them. The third line has 'x' marks with fret numbers 3, 3, and 3 below them. The bottom line has '1' at the beginning and '1' further along.

Right speaker guitar
(Main riff is in left speaker)

Tablature for the right speaker guitar part. It consists of six horizontal lines. The top line has a sequence of fret numbers: 3, 3, 3, 3, 3, 3, 3, 3, 3, 3, 3, 3, 3, 3, 3, 3. The second line has a sequence of fret numbers: 1, 1, 1, 1, 1, 1, 1, 1, 1, 1, 1, 1, 1, 1, 1, 1.

(1:55)

Tablature for the fifth system. It consists of six horizontal lines. The top line has a sequence of fret numbers: 5, 5, 5, 5, 5, 5, 5, 5, 5, 3, 3, 3, 3, 5, 3, 3, 3, 3.

Tablature for the sixth system. It features six horizontal lines. The top line has '1' at the beginning and '1' further along. The second line has 'x' marks with fret numbers 1, 1, and 1 below them. The third line has 'x' marks with fret numbers 1, 1, and 1 below them. The bottom line has '1' at the beginning and '1 1 1 1 1' further along.

7/5 7/5 7/5 7/5 7/5 7/5 7/5 7/5 7/5 5/3 5/3 5/3 5/3 5/3 5/3 5/3 5/3

Guitar solo
(2:15)

/17 17 full 10 10 13 10 8 8 1/4 7 8 10 6 8 10 6 8 10 8 6 10

6 10 8 10 8 6 9 6 8 6 7 6 3 4 3 5 3 5 3 3 3 3 5 3 5 3

6 5 5 5 1 17 5 7 5 7 5 7 5 7 5 7 7 5 8 7 5 8

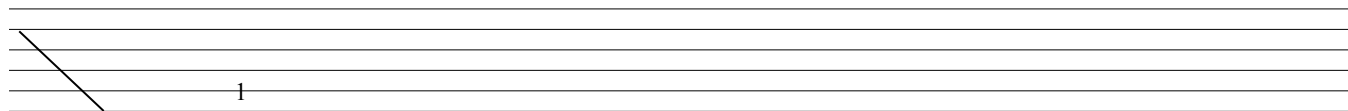
/10 8 10/12 15 15 18 full (18) 15 18 full 14 12 16 15 13 16 full 13 16

full 13 16 full 13 15 16 13 10 12 10 12 10 12 10 8 10 8 18 3 0 5

Harm.

w/bar

w/bar cont. (2:47)

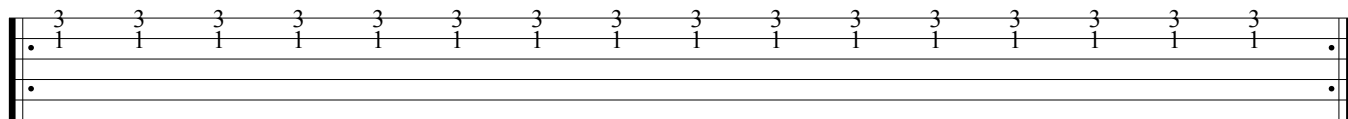


(2:47)

Right speaker guitar

(Main riff is in left speaker)

(4x)



(3:18)

